

INSTALLATION INSTRUCTIONS

Part # D3F37AP100

2016+ Hyundai Tucson Running Boards

PARTS LIST:

2	Driver/Passenger Running Boards	1	(PC2) Passenger Center # 2 Mounting Bracket
1	(DF) Driver Front Mounting Bracket	1	(PR) Passenger Rear Mounting Bracket
1	(DC1) Driver Center # 1 Mounting Bracket	16	M10 x 30mm – 67mm Bolt Plates
1	(DC2) Driver Center # 2 Mounting Bracket	16	M10 x 30mm OD x 2mm Flat Washers
1	(DR) Driver Rear Mounting Bracket	16	M10 Nylon Hex Nuts
1	(PF) Passenger Front Mounting Bracket	16	M6 Flat Washers
1	(PC1) Passenger Center # 1 Mounting Bracket	16	M6 Nylon Lock Washers



PROCEDURE:

1. REMOVE CONTENTS FROM BOX. VERIFY ALL PARTS ARE PRESENT. READ INSTRUCTIONS CAREFULLY BEFORE STARTING INSTALLATION.
2. Starting on the passenger side remove the plastic undercover near the rear. Then remove the grommets shown in **(Figure 1)** To access the two outside grommets located for the center brackets, hold up the center brackets to the inside mounting location to find the outside grommet locations. Carefully pry down the plastic side skirt.
3. Drill two 10mm holes on the plastic side skirt used for both center brackets. **(Figure 2)**
4. Insert (1) M10 x 30mm – 67mm Bolt Plates into the frame hole and (1) M10 x 30mm – 67mm Bolt Plate into hole beside the front jack point for the passenger front mounting brackets. **(Figure 3)** Insert (2) M10 x 30mm – 67mm Bolt Plates into the frame holes for both Passenger Center # 1 and Passenger Center # 2 brackets and (2) M10 x 30mm – 67mm Bolt Plates into the outside holes and drop the threaded bolt through the side skirt hole. **(Figure 4 & 5)**
5. Insert (1) M10 x 30mm x 67mm Bolt Plate onto the frame hole for mounting the Passenger Rear Bracket. Temporarily attached bracket in place with (1) M10 Nylon Hex Nut to mark the drilling spot.
6. Remove bracket and drill a pilot hole on the marked drilling spot with a 3/16” drill bit. Enlarge hole with a unibit to 7/8”. Ensure to coat the 7/8” hole with undercoating to prevent rust.
7. Insert (1) M10 x 30mm – 67mm Bolt Plate into the 7/8” hole and mount passenger Rear Mounting Bracket with (2) M10 x 30mm OD x 2mm Flat Washers, and (2) M10 Nylon Hex Nut. **(Figure 6) IMPORTANT: Do not fully tighten hardware at this time and leave all hardware loose.**
8. Reinstall the plastic under cover. Mark the cutting location of the Passenger Center #2 Bracket and cut the plastic under cover with a utility knife or hacksaw. **(Figure 7)**
9. Mount passenger Front, Center # 1 and Center # 2 brackets with the included M10 x 30mm OD x 2mm Flat Washers and M10 Nylon Hex Nuts.
10. Carefully position the (1) Driver/Passenger running board onto the Mounting Brackets and attach it using the included (8) M6 Flat Washers and (8) M6 Nylon Hex Nuts **(Figure 8)**. Snug but do not tighten.
11. Align side running board properly, and then tighten all hardware.
12. Repeat steps 2 - 10 for the driver side.
13. Do periodic inspections to the installation to make sure that all hardware is secure and tight.

Passenger Side Installation Pictured

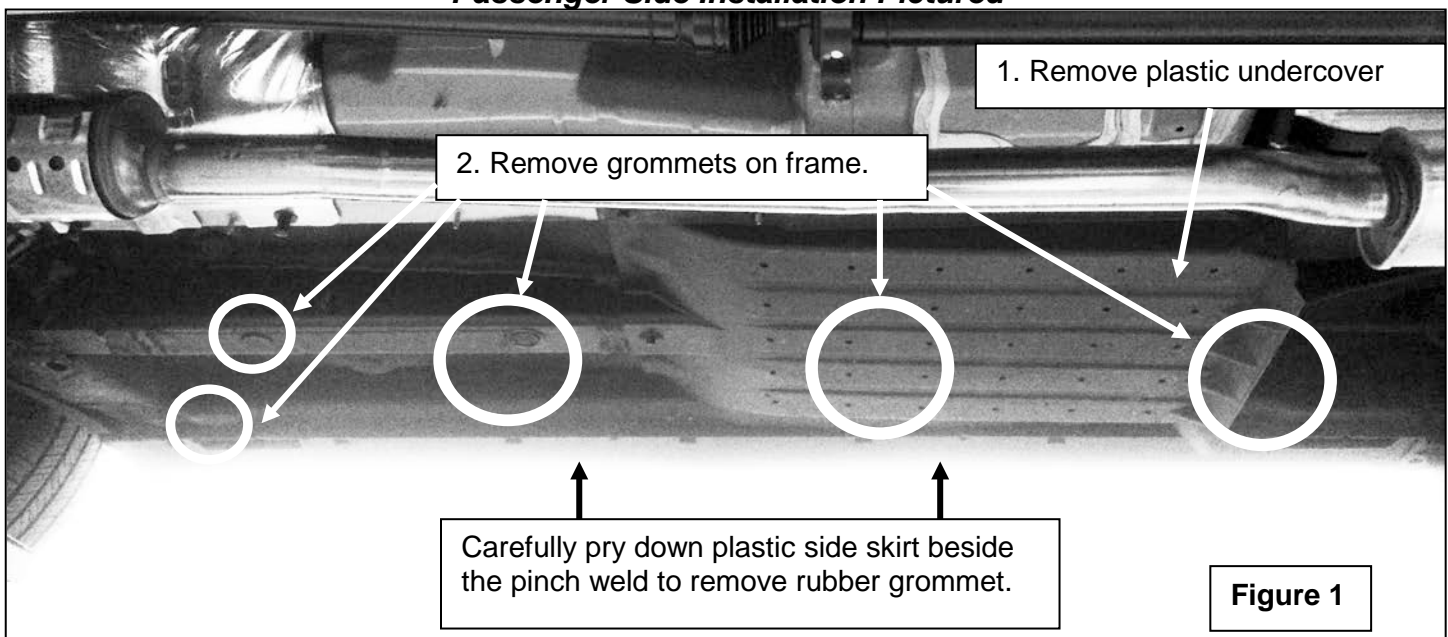
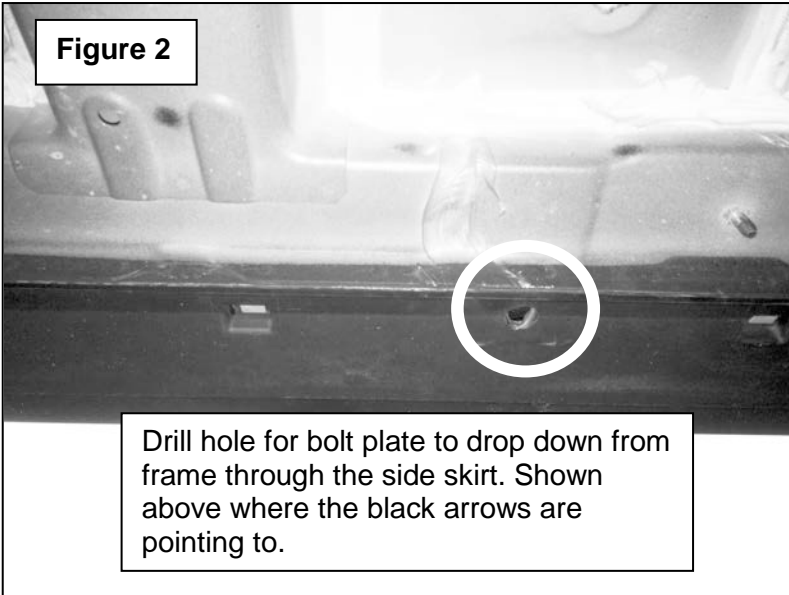
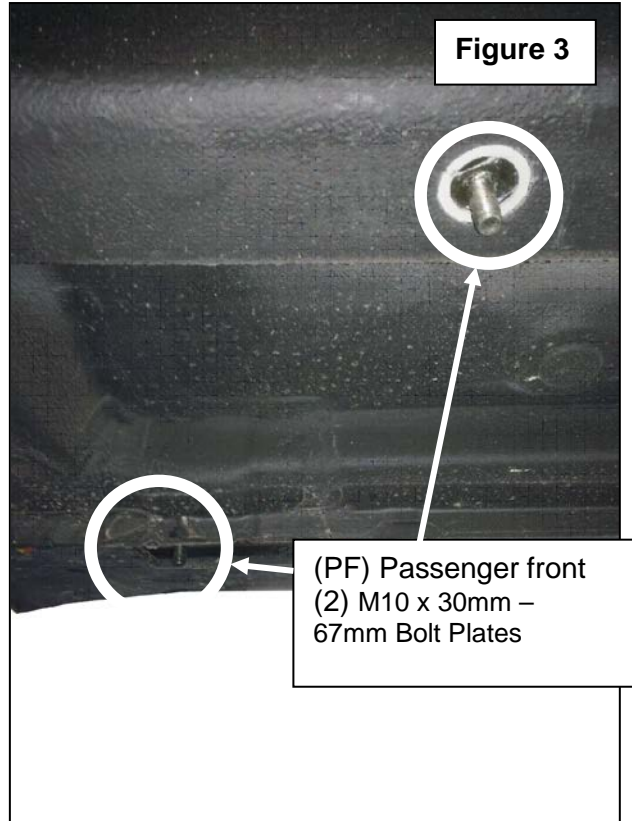


Figure 2



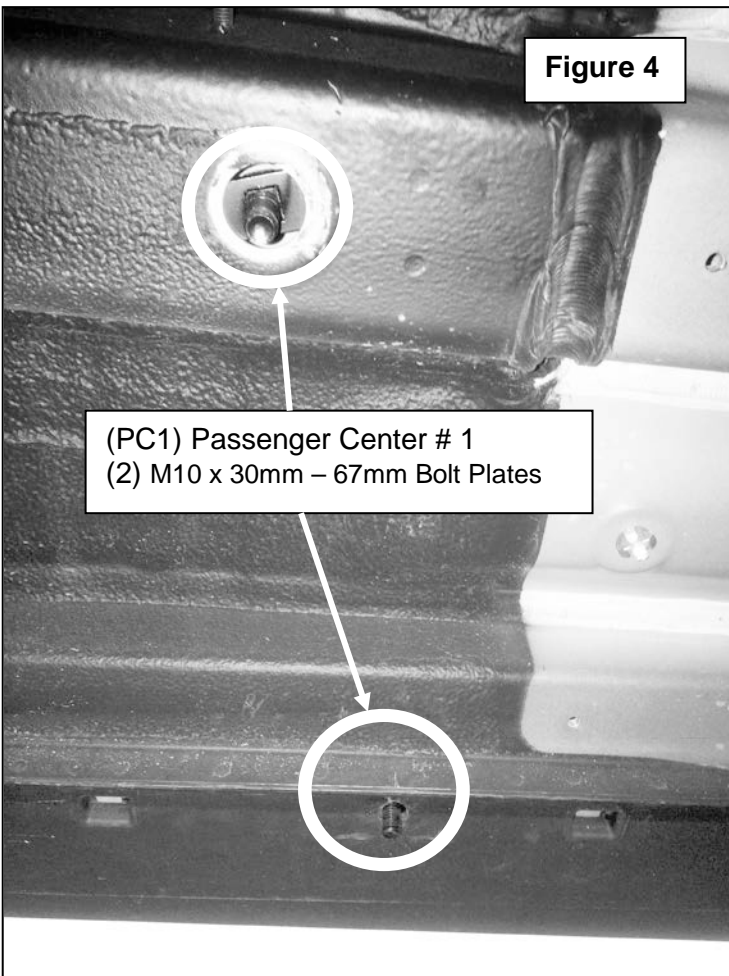
Drill hole for bolt plate to drop down from frame through the side skirt. Shown above where the black arrows are pointing to.

Figure 3



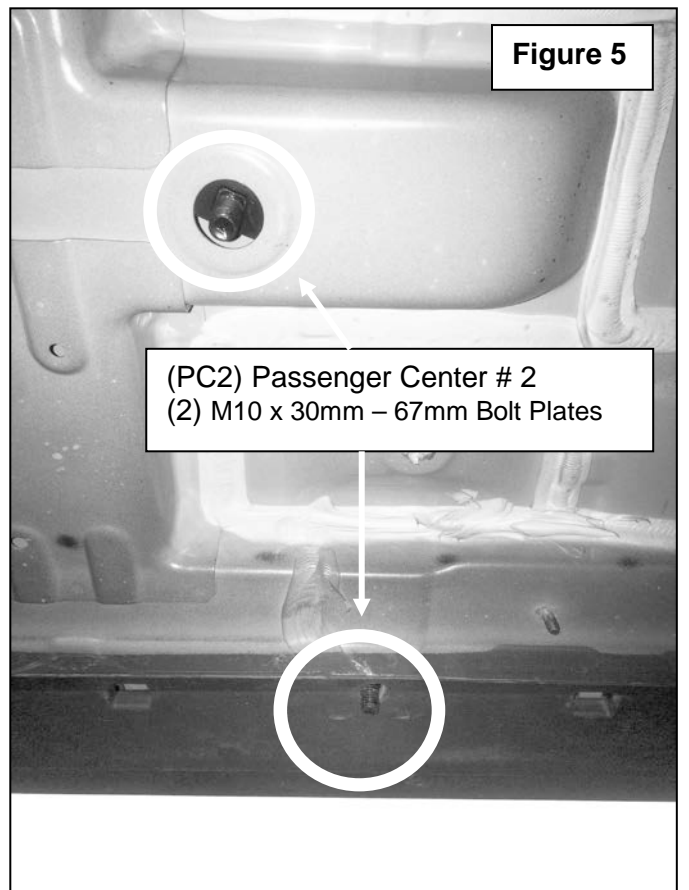
(PF) Passenger front
(2) M10 x 30mm –
67mm Bolt Plates

Figure 4



(PC1) Passenger Center # 1
(2) M10 x 30mm – 67mm Bolt Plates

Figure 5



(PC2) Passenger Center # 2
(2) M10 x 30mm – 67mm Bolt Plates

1. Mark drilling spot.
2. Remove Bracket.
3. Drill pilot hole with 3/16" drill bit.
4. Enlarge hole with a unitbit to 7/8".
5. Insert M10 x 30mm-67mm Bolt Plate
6. Install Passenger rear bracket with included hardware.



Passenger Rear

Figure 6

Figure 7

Mark cutting location of (PC2)
Passenger Center # 2.

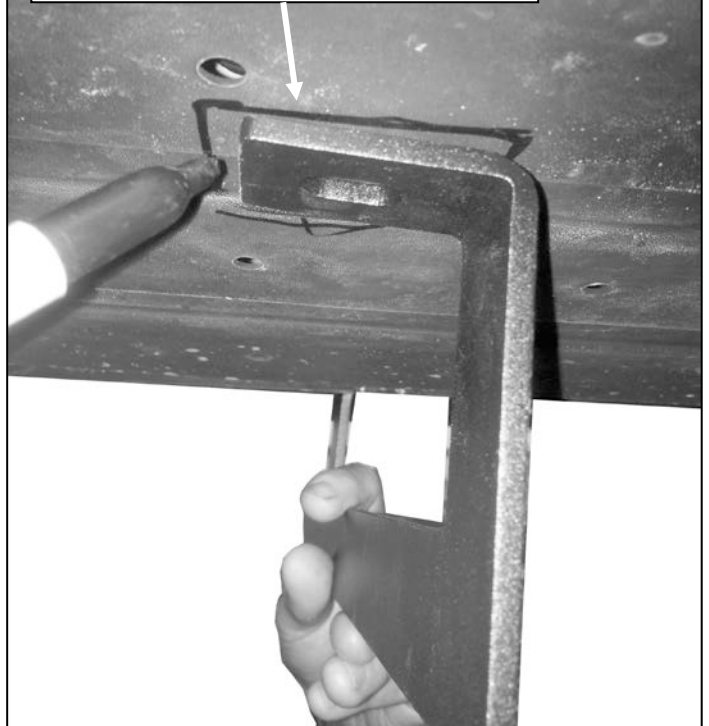
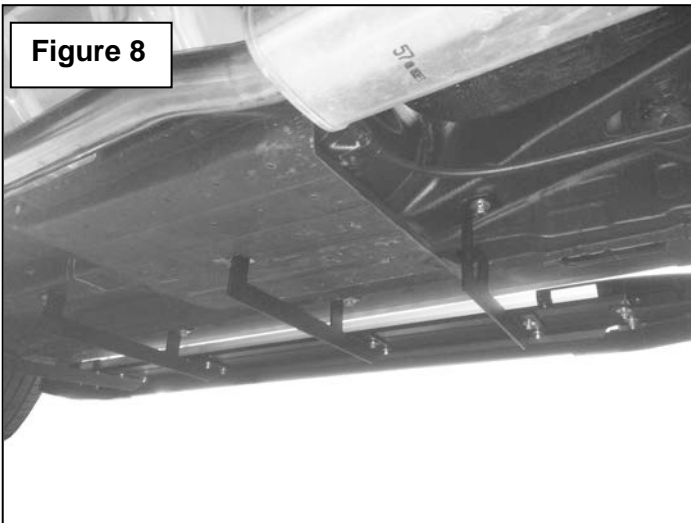


Figure 8



Installation complete

Figure 9

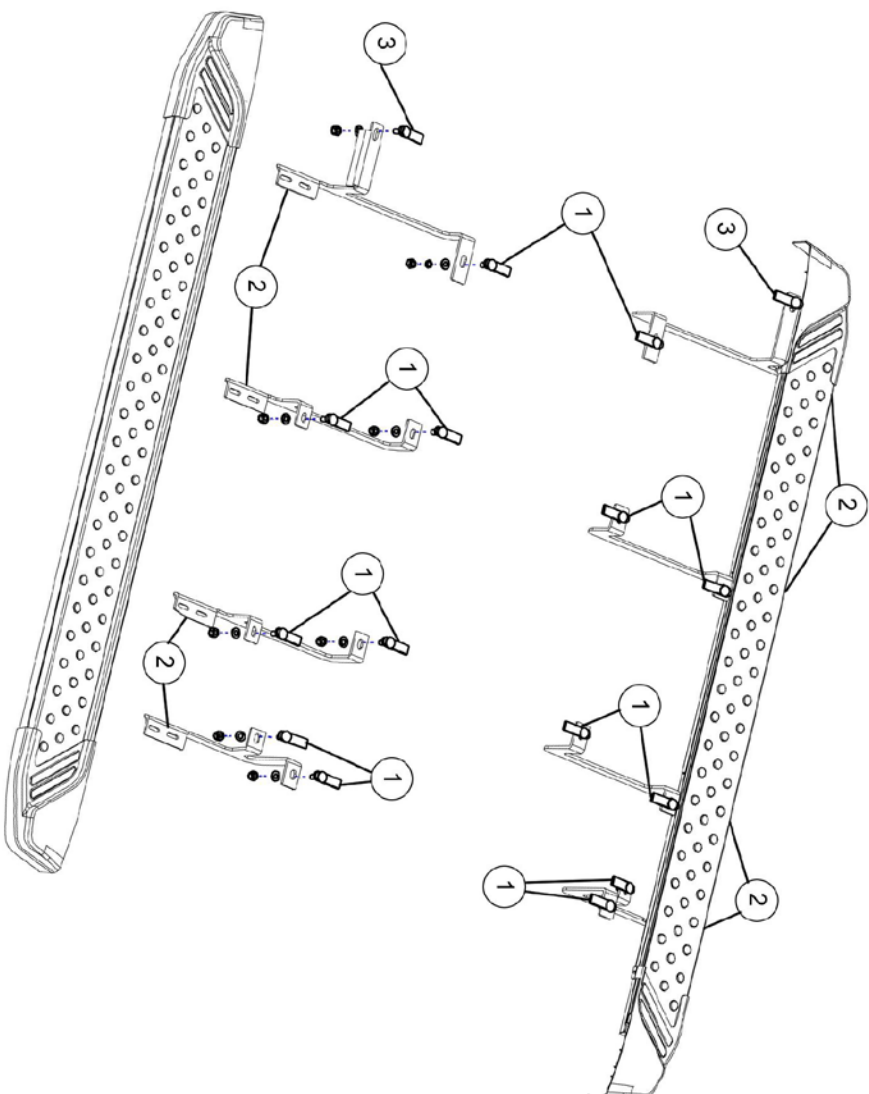




HYUNDAI

2016+ Hyundai Tucson Running Boards

INSTALLATION INSTRUCTION / INSTRUCTIONS DE MONTAGE Part# / Piece n: D3F37AP100



GROUP #	QTY SETS	NOTES	WRENCH SIZE
# 1	14	Used for mounting brackets to vehicle.	16
# 2	16	Used for mounting running boards to brackets.	10
# 3	2	Used for mounting brackets to vehicle.	16

