



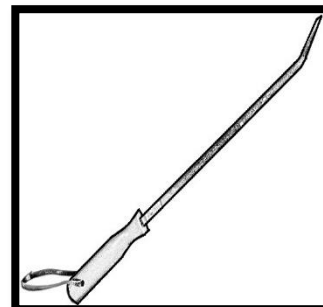
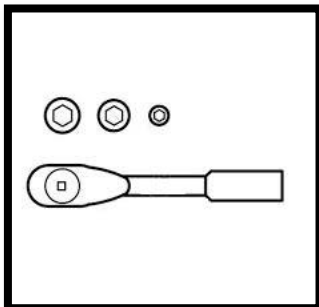
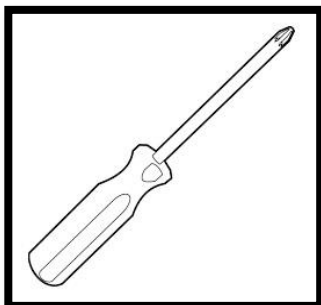
INSTALLATION INSTRUCTIONS  
KIA PART #: 99997 30UM05  
2016+ SORENTO TRAILER HITCH

PARTS LIST:

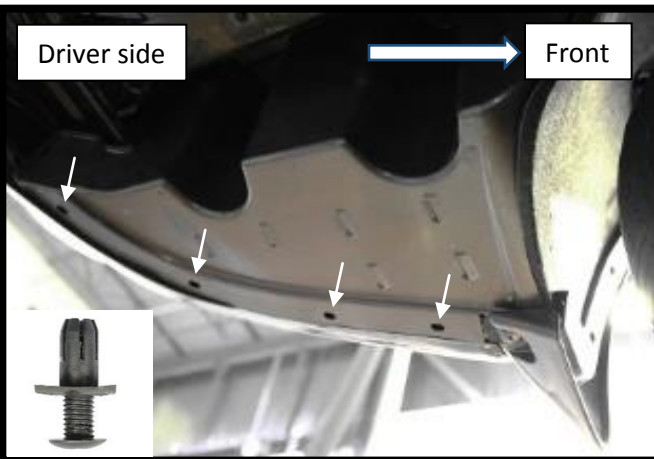
#1	4	M12 X 120 Carriage Bolt	#4	2	M6 X 20 Hex Flange Bolts
#2	4	M12 X 26 Flange Nuts	#5	1	Steel Plate (For passenger side only)
#3	4	M10 X 1.25 X 35 Hex Flange Bolts	#6	1	Wire Terminal Holder

PROCEDURE:

1. THIS INSTALLATION REQUIRES TWO PEOPLE.
2. REMOVE CONTENTS FROM THE BOX AND VERIFY ALL PARTS ARE PRESENT. READ INSTRUCTIONS CAREFULLY BEFORE STARTING INSTALLATION.
3. PREPARE THE FOLLOWING TOOLS:
  - PHILLIPS HEAD SCREWDRIVER.
  - 19MM, 17MM AND 10MM WRENCH/SOCKET.
  - PRY BAR.



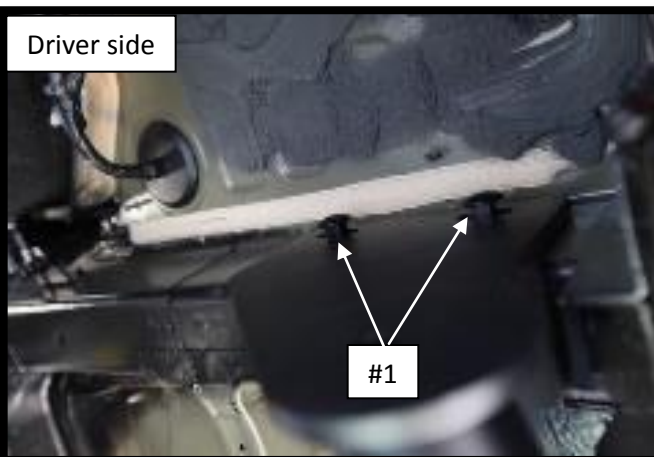
1. Remove the spare tire lock cover with flat head screwdriver then use original tool to remove the spare tire and put away.



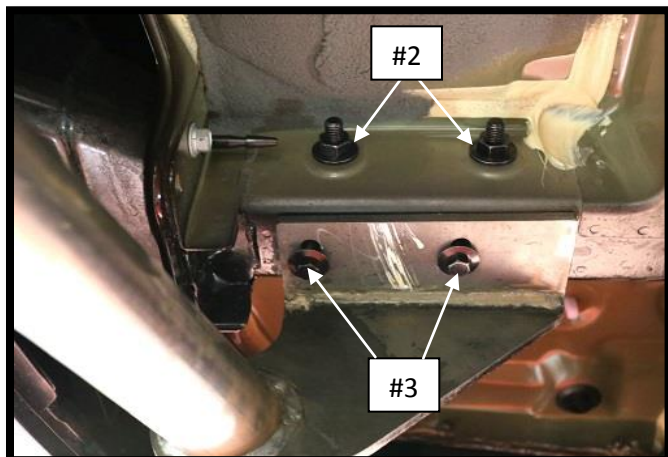
2. Use Philips screwdriver to remove the drive side plastic undercover.



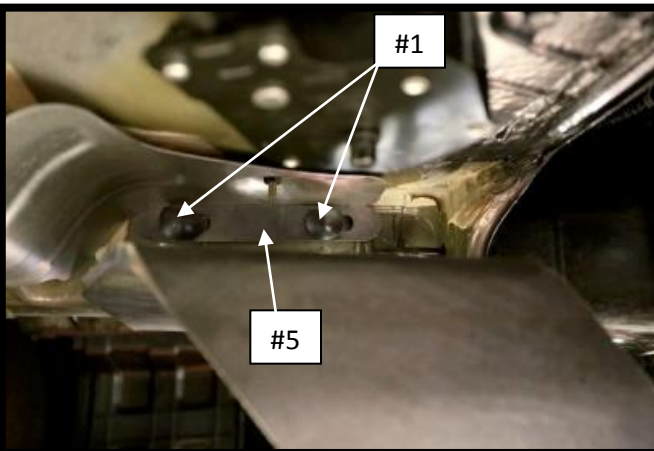
3. Use pry bar to remove three exhaust rubber hangers.



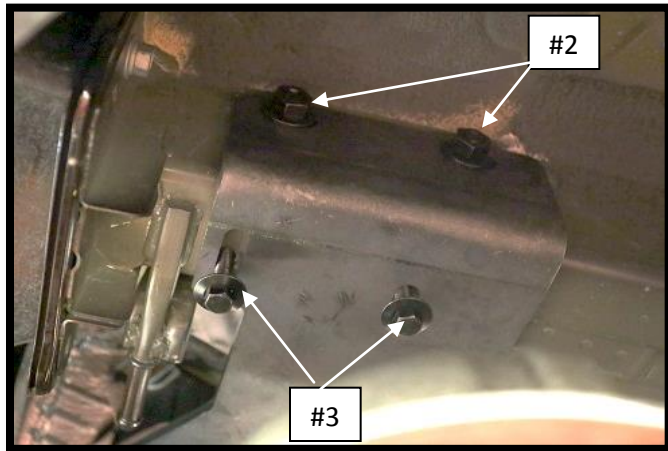
4. Raise hitch into position. Insert M12x120 (#1) carriage bolts through the driver side plate and frame rail.



5. Secure bolt with M12 flange nuts (#2). And install M10x1.25x35 flange bolt (#3) to the existing weld nuts.



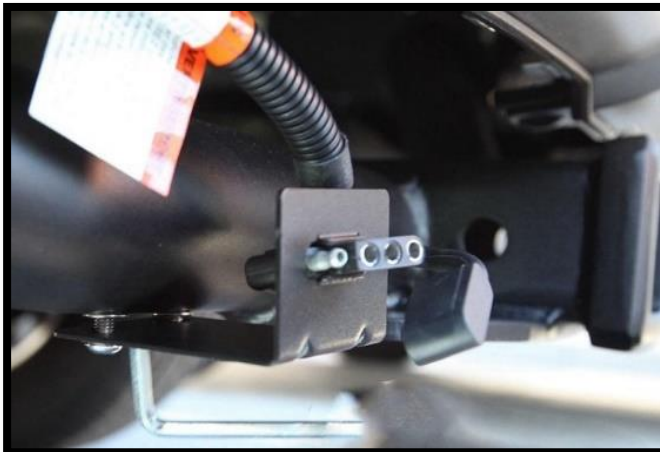
6. Insert M12x120 (#1) carriage bolts through the steel plate (#5) at the passenger side frame rail.



7. Secure bolt with M12 flange nut (#2). And install M10x1.25x35 flange bolt (#3) into the existing weld nuts on the passenger side frame rail.



8. Align the hitch in the center position. Torque all M12 hardware (#1, #2) to 110 ft.-lbs. torque all M10 hardware to 48 ft.-lbs.

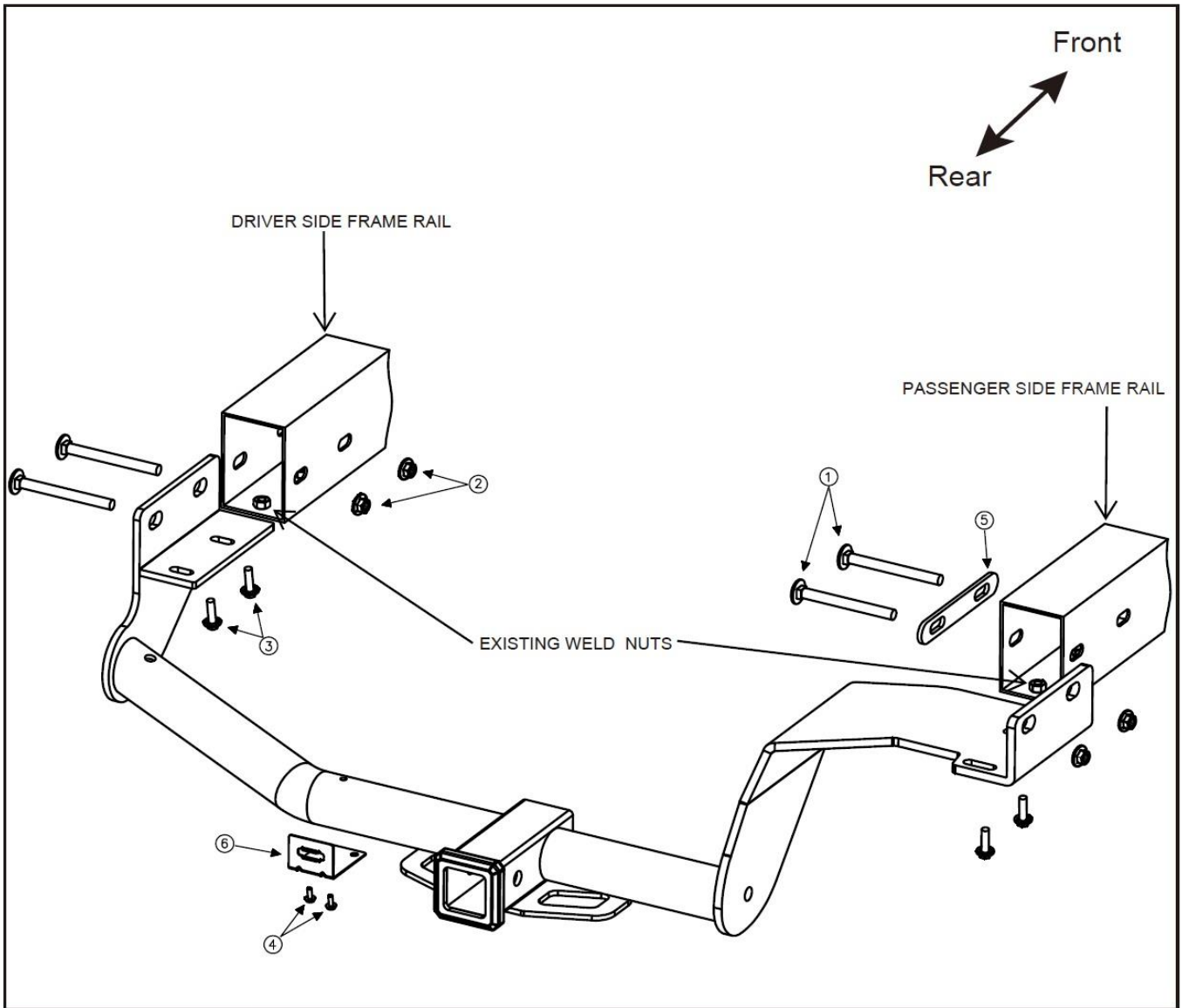


9. Install wire terminal holder (#6) with M6 X 20 flange bolts (#4)



10. Reinstall the spare tire, exhaust hangers and undercover.

# Kit Overview



## HARDWARE LIST

#	Picture	QTY	Desc	Tool Size	#	Picture	QTY	Desc	Tool Size
1			M12X120mm Carriage flange bolt	Lock by side plate & steel plate # 5	4			M6X20 flange bolt	M10 socket
2			M12 Hex head flange nut	M19 socket	5			Steel plate	Lock carriage bolt. passenger only
3			M10X1.25x 35 flange bolt	M17 socket	6			Wire terminal holder	Mount by M6X20 flange bolt # 4